

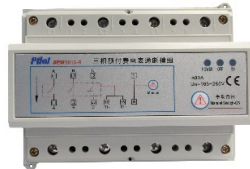
Prepaid Energy Meter



SPM9511
Single Phase



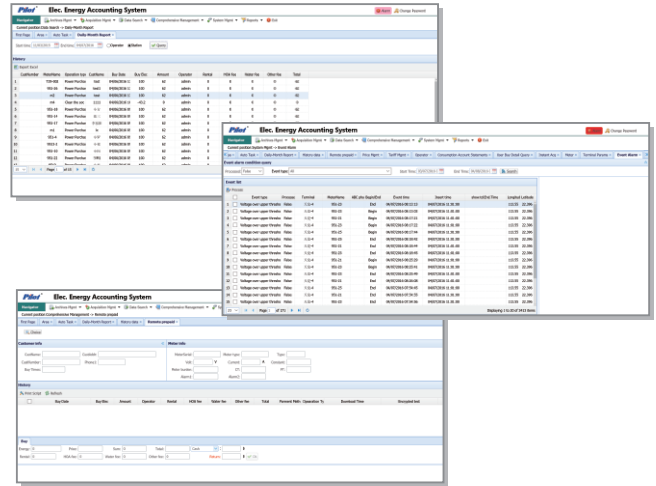
SPM9513
Three Phase



SPM9513-R
SPM9513's Relay Module

- kWh: Class 1.0
- 35mm DIN Rail installing
- Multi tariff & Load manage
- Anti power stealing alarm
- Support overdraw function
- RS485, Modbus protocol

Online Billing & Recharge Software



Basic Function

- Suit for 120V, 220V, 230V, 240V AC power system
- Default Prepaid mode, auto switch power by remained energy
- Selectable post-paid mode, lock mode
- LCD display for energy consumption, power measure display
- Historical records of energy for latest 31days & latest 12months
- Recharge information records for latest 50 times
- Alarm and records for trip, overload and other abnormal status

Software Function

- B/S frame automatic remote metering with SQL
- Remote prepaid charge by network TOKEN code
- Support multi tariff setting and remote control
- Energy consumption and billing report export
- Provide admin, manage, recharge authority management
- E-mail, SMS, WeChat notifications to per user
- Historical records of meter data, alarm and recharge information

Parameter Measure and Display

Parameter		Accuracy	Resolution	Measuring Range
Statistical Data	Remained energy (kWh)	/	/	0~9999999.9 kWh
	Active energy (kWh)	Class 1 (Direct in) Class 0.5 (External CT)	0.1kWh	0~9999999.9 kWh
	Reactive energy (kvarh)	Class 2	0.1kvarh	0~9999999.9 kvarh
	Voltage	0.2%	0.01V	ph-N: 0~300V
	Current	0.2%	0.001A	Direct in : 0~80A, Three phase by external CT: 5(6)A
	Active power	0.5%	0.1W	0~1MW
	Reactive power	0.5%	0.1Var	0~1Mvar
	Apparent power	0.5%	0.1VA	0~1MVA
	Power factor	0.5%	0.001	-1.000~+1.000
	Frequency	0.01	0.01Hz	47~65Hz

Technical Specification

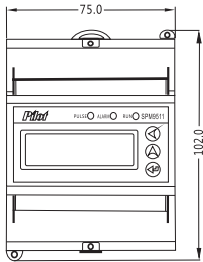
Rated Current	Direct: 10 (80) A, Ib=10A, Max = 80A External CT: 5(6)A
Rated Voltage	AC 120V, AC 220V, 230V, 240V
Frequency	50/60Hz (Optional), range: 47~65Hz
Input Consumption	<2VA
Power Supply	Self supply: 220Vac (L-N), range: 184~276Vac 120Vac (L-N), range: 96~144Vac

Switch Relay	Magnetic latching relay (SPM9511 build-in)
Connection Mode	Single phase (L-N)
Pulse Output	1 channel (settable for kWh or kvarh) constant: 1600imp/kWh
Clock	Build in, Error < 0.5s / per day
Starting Current	0.4%Ib (direct connect) = 0.04A
Withstand Voltage	impulse voltage: 6KV, Aux terminal: 2KV

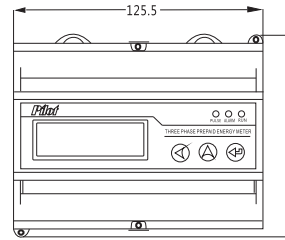
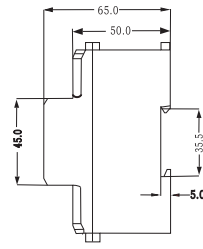
Communication	RS485 serial, Modbus-RTU Baud rate: 2400, 4800, 9600 Address: 1~247	Environment	Operating temperature: -20 ℃ ~ +55 ℃ Storage temperature: -40 ℃ ~ +70 ℃ Humidity: 5%~95% non-condensing
Design Standard	IEC62053 IEC62055 DIN-EN-50022	EMC Standard	Electrostatic discharge immunity test IEC 61000-4-2, Level 4 Radiated immunity test IEC 61000-4-3, Level 3 Electrical fast transient/burst immunity test IEC 61000-4-4, Level 4 Surge immunity test (1, 2/50μs ~ 8/20μs) IEC 61000-4-5, Level 4 Conducted emission EN55022, Class B Radiated emission EN55022, Class B

Dimension & Installation

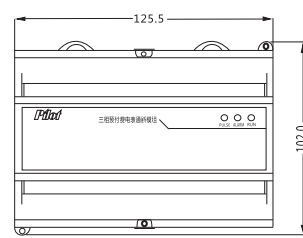
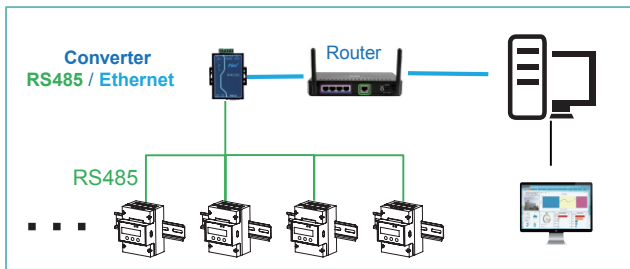
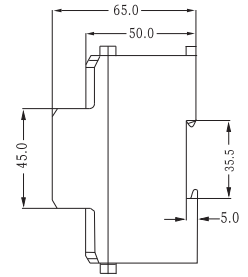
Unit: mm



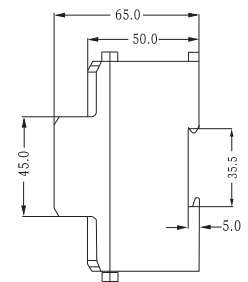
SPM9511



SPM9513



SPM9513-R



Order Information

> SPM9511--①--②--③ (Single phase)

①	80	10(80)A direct
②	V1 V2	Suit for 220, 230, 240Vac ph-N Suit for 110, 120Vac ph-N
③	50 60	50Hz 60Hz

> SPM9513 --①--②--③ (Three phase)

①	80 5	10(80)A direct 5(6) for external CT
②	V1 V2	Suit for 220, 230, 240Vac ph-N Suit for 110, 120Vac ph-N
③	50 60	50Hz 60Hz

PILOT Prepaid Billing & Recharge software

Sell by software licence

please contact us to get detail configuration and view online Demo.

> SPM9513 -R --① (Relay module for SPM9513)

①	V1 V2	Suit for 220, 230, 240Vac ph-N Suit for 110, 120Vac ph-N
---	------------------------	---

Pilot® ZHUHAI PILOT TECHNOLOGY CO., LTD.
PILOT (HENGQIN)CO.,LTD

Add: No. 15, Keji 6 Road, Chuangxin Hai'an, Tangjia Hi-tech Zone, Zhuhai, Guangdong, China

Post Code: 519085 Tel: +86 756 3626166 /3639029

Fax: +86 756 3629600/ 3629700

Email: overseamarket@pmac.com.cn

http://en.pmac.com.cn



Your representative